



GMT MONTHLY MEMBERSHIP PROGRESS REPORT

Results as of: 6/30/2020

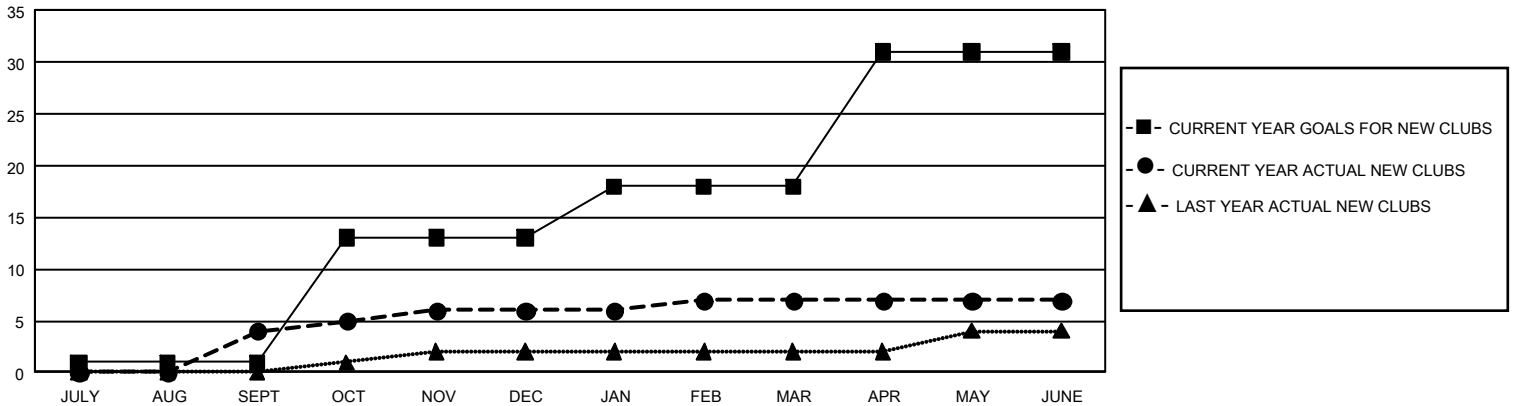
GMT Constitutional Area 1, Group C

GMT: OPEN

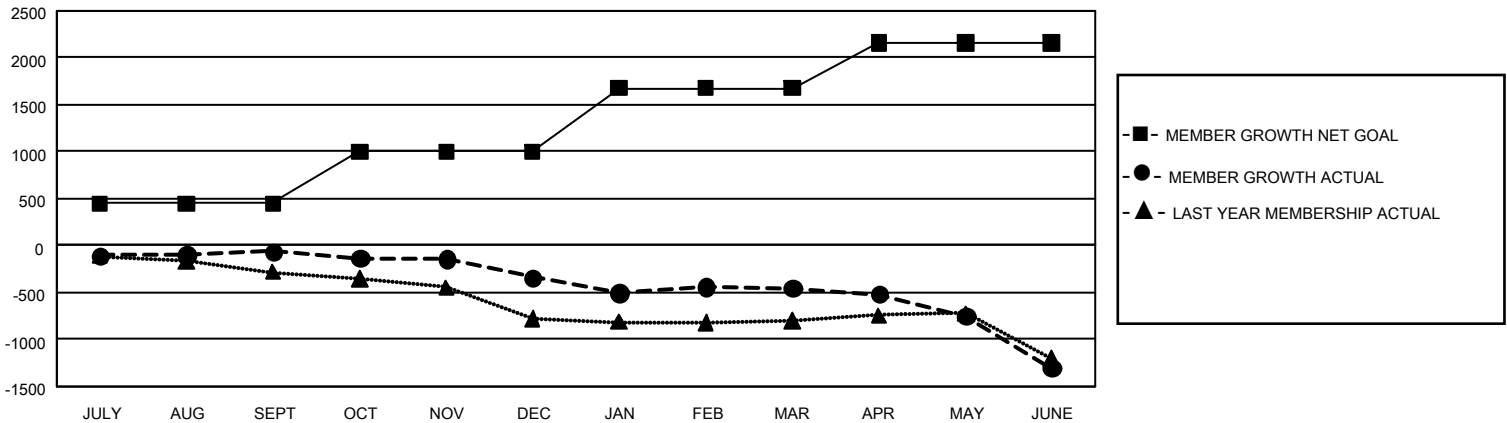
REPORT DOES NOT INCLUDE CLUBS IN UNDISTRICTED AREAS.

Clubs				Members			
RESULTS FOR 2019-2020				RESULTS FOR 2019-2020			
QUARTER	NEW CLUB GOAL	NEW CLUBS	DROPPED CLUBS	QUARTER	MEMBER GROWTH NET GOAL	MEMBER GROWTH ACTUAL	DROPPED MEMBERS ACTUAL (including transfers)
JULY/AUG/SEPT	3	4	2	JULY/AUG/SEPT	1,338	782	767
OCT/NOV/DEC	36	2	4	OCT/NOV/DEC	1,665	744	982
JAN/FEB/MAR	15	1	3	JAN/FEB/MAR	2,022	676	692
APR/MAY/JUNE	39	0	10	APR/MAY/JUNE	1,443	248	1,060

GOALS AND ACTUAL NEW CLUBS CUMULATIVE



GOALS AND ACTUAL MEMBERS CUMULATIVE



DROPPED CLUBS: 15	671 CLUBS OF 1,202 ADDED 1 OR MORE NEW MEMBERS	<u>GENDER DISTRIBUTION</u> MALE 24,412 (71.55%) FEMALE 9,706 (28.45%)
<u>DROPPED MEMBERS</u> DECEASED 432 CLUB CANCELLED 15 OTHER 3,054 <hr/> TOTAL 3,501	CLICK HERE FOR CUMULATIVE MEMBERSHIP DATA	TOTAL FAMILY UNIT MEMBERS 6,406 FAMILY MEMBERS PAYING HALF DUES 3,244